

Royal Horticultural Society

Silloth Nominations:
'Coastal Town' & 'It's Your Neighbourhood'

Presentation by Anna Malina
15th July 2014



Silloth-on-Solway Town Council

Coastal Town – RHS Description

“**A coastal community** must be an area that actively encourages visitors with a resort, beach and/or harbour (which can be part of a commercial harbour), adjacent to or within easy and reasonable access of the local community.

The area will have facilities providing varied recreational opportunities for visitors. The beach/ harbour will have some of the following: café or restaurant; shop; toilet; public transport; supervision; first aid; public telephone.

A coastal resort is described as an area which has substantial visitor accommodation and tourism as an integral part of the local economy.”

'It's Your Neighbourhood' Nomination for the 'Community Garden'

- RHS Core Pillars
 - Community Participation
 - Environmental Responsibility
 - Gardening Achievement

Timeline - Silloth's Development

- Cistercian Monks – Salt 'Laithes by Sea' hence Silloth
- 1850s – Silloth Docks together with the Railway led to planned development of Silloth as a Victorian Town
- 1860s - Planting of shrubs on Silloth Green - 45 acres - the major tourist attraction in Silloth
- Well off Victorians saw Silloth as an attractive sea side destination
- Cheap rail fares brought influx of new visitors
- WW2 – Silloth Airfield brought arrival of servicemen from all over the world
- Green was badly deteriorated over war years

Green Refurbishment



- 2010-2012 Successful funding bids to Heritage Lottery and DEFRA along with a good deal of financial input from Silloth Town Council led to:
 - Restoration of Heritage Features:
 - Victorian Pagoda
 - Edwardian Ladies Toilets
 - Rose Garden
 - Putting Green
- The work was overseen by Silloth Town Council and project managed by Cumbria County Council

Green Refurbishment

- Funds were also allocated for new features:
 - Water Play Area for Children
 - Adventure Play for Children
 - Accessible Toilet Block
 - Accessible Paths
 - Improved Street Furniture
 - Conservation of Landmark Pine Plantations
 - Funds for Signage and Interpretation
 - Construction of new BMX Track
 - Contribution to new Town Garden

Silloth Green Re-opened after Refurbishment



Children's Splash Pad



Children's Adventure Play Area



Volunteers and Events in Silloth

For many years dedicated members of the Community formed committees to organise annual events in the Town, including following:

- Carnival
- Vintage Rally
- Kite Festival
- Music & Beer Festival
- Christmas Lights and Switch On
- Santa Dash







Silloth Tourism Action Group (STAG)

Formed to support tourism in the town.

- Works in partnership with other groups in the town and also seeks funds to organise additional events, including in 2014:
 - Beach Half Marathon & 10K
 - Theatre on the Green
 - Bonfire and Fireworks Display
 - Fusion Folk Singing Evening
 - Sunday afternoon 'Gigs on the Green'
- STAG also received funding from HLF's Heritage Stream for a project on WW2 Silloth Airfield (2014-2015)
- STAG formed 'Friends of the Green' who:
 - Seek funds for the Green eg. to organise Silloth Green Day annually
 - Helped in 2013-2014 with the design of the Community Garden
 - Sought funds to buy sensory equipment for the garden
 - Are committed to looking after the Community Garden in long term
 - Provide support to help maintain the Green

Cumberland
Building Society





Eden
Runners

5





The University of Georgia is a public research university in Athens, Georgia. It is the largest university in the state and one of the largest in the South. The university is a member of the Association of Public Universities and Colleges (APUC) and the Association of American Universities (AAU).



The University of Georgia is a public research university in Athens, Georgia. It is the largest university in the state and one of the largest in the South. The university is a member of the Association of Public Universities and Colleges (APUC) and the Association of American Universities (AAU).



The University of Georgia is a public research university in Athens, Georgia. It is the largest university in the state and one of the largest in the South. The university is a member of the Association of Public Universities and Colleges (APUC) and the Association of American Universities (AAU).



RHS Special Award – Community Garden

Community participation in Community Garden, i.e.

- design
- planting and
- on-going maintenance

- Plans also for
 - Education Packs
 - Guided Tours

Community Workshop: Input to Design of the Community Garden



Community Garden Workshop



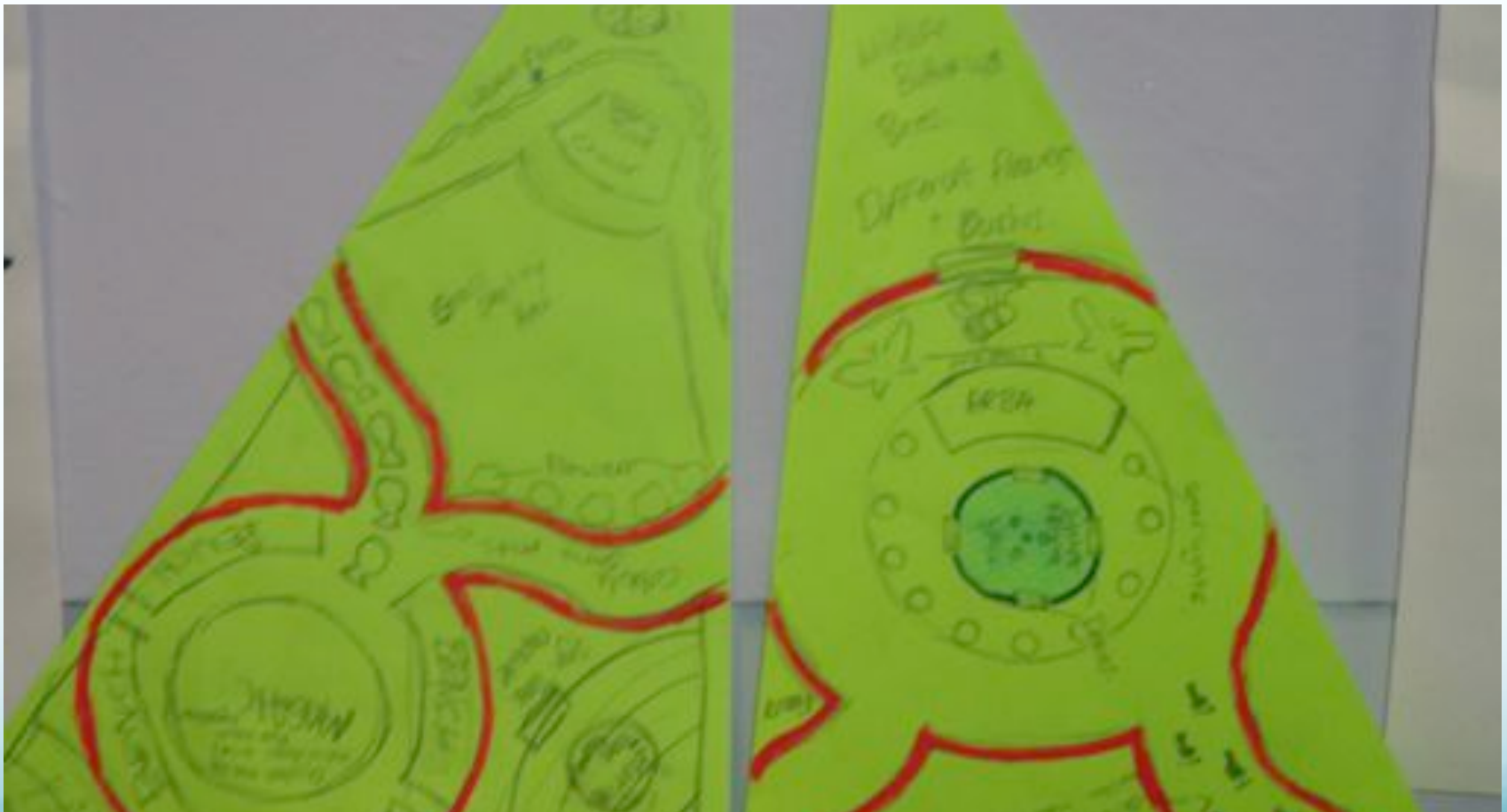
SEPTEMBER

- 01 Leeds, Grand Tour
- 03 Nottingham, Royal Concert Hall
- 07 - 08 Leeds, Theatre
- 08 Edinburgh, Playhouse
- 09 Glasgow, Theatre Royal
- 11 Birmingham, Hippodrome
- 12 Leeds, Theatre

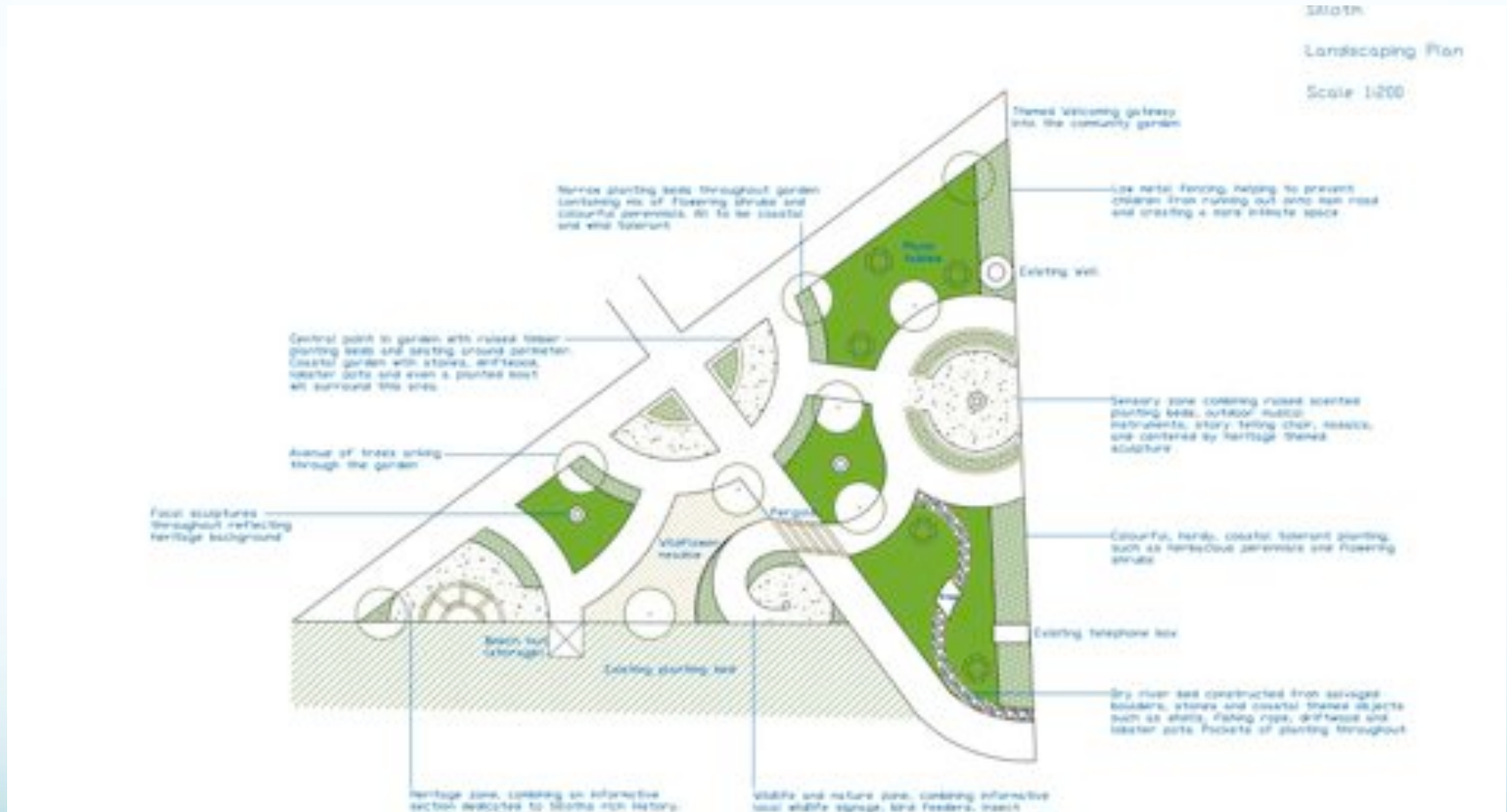
Youngsters engrossed in designing Community Garden



Community Design for Community garden



Final Design of Community Garden





Environmental aspects of the Community Garden

- Planted with coastal tolerant hardy plants that can cope with salty air and strong inland winds
- Wildflowers in Wildlife Zone attract butterflies and bees
 - Also Buddlea; Sedum; Dianthus
- Wildflower Turf was supplied by a specialist and is low maintenance, weed suppressing, easy to handle and colourful, attracting bees and butterflies
- Herbs & grasses also used – good for textual play – children use sense of touch and smell; can be taught that herbs are used in food

Saving Peat Bogs & Flora & Fauna



Peat Free Dalefoot compost was used in the Community Garden; harvested from Lakeland Fells to give a potash rich base. It's combined with wool sheared from sheep to give slow release nitrogen and added water retention.

60 youngsters from Nursery, Primary School and Community College each adopted and planted a plant in the Community Garden

































































Silloth-on-Solway Town Council

- Employs:
 - Town Clerk
 - Maintenance Team (3 full-time and one half-time)
 - Community Engagement Officer
- Parish Clerk - Up to date Maintenance Plan for the Green
- Maintenance Team are highly trained
- Community Participation and involvement paramount

RHS Tour around Silloth

- Library & Discovery Centre Garden
- Solway Community Technology College
 - Poly Tunnel
- BMX Track & Pines (natural habitat)
- Edwardian Toilets
- Signage and Interpretation
- School Mosaic (Community Art)
- Accessible Paths
- Street Furniture
- Main Welcome Sign and Interpretation Panel
- Community Garden
- Rotary Tree
- Story Telling Chair (Solway Woodcarvers)
- Sensory Equipment for Children (funds from Friends of the Green)

RHS Tour contd/...

- Green Flag
- Putting Green
- Car Parks
- Viewing Platform
- RNLI Car Parks
- Toilets
- Adventure Playground Area
- Water Play Area
- Picnic Area
- Entertainment Arena

RHS Tour Contd/...

- Interpretation Panel bottom of Pagoda hill
- Victorian Pagoda
- Pines
- Avenue
- Rose Garden
- Car Park
- Maintenance Team Base

More information about the town

- Silloth Town Council
 - <http://www.silloth-on-solway-tc.gov.uk/>
- Silloth Green
 - <http://www.sillothgreen.co.uk/>
- Silloth Tourism Action Group
 - <http://www.sillothonsolway.com/>